



INTRODUCING FILEVISION VERSION 5.5

THE ENHANCEMENTS

Fraame and FileVision are delighted to provide a pre-release overview of FileVision version 5.5. Version 5.5 delivers some exciting new capabilities to help optimise valuable time for the more important tasks of your business. Prior to release, Fraame will conduct extensive testing in our own environment to ensure a smooth transition between versions. We will discuss dates and timings, to meet your organisations specific upgrade requirements.

TECHNOLOGY SUPPORT

Microsoft SQL Database

These changes allow **Microsoft** FileVision to run on SQL Server 2008 as an alternative to the Jade Object Oriented Database.

.Net compatibility

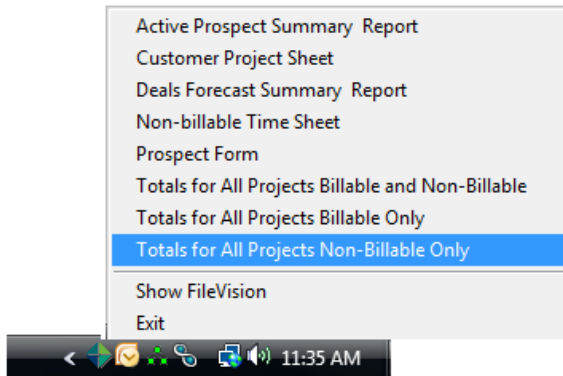
FileVision v5.5 supports and is compatible with the .Net development tool set.

64-bit

Performance will be increased as well as scalability and stability, with the adaption of the FileVision 64-bit server. However, the 32-bit server will still be supported.

Quick Access from the Systems Tool Bar

FileVision will have the ability to quickly access the correct window or Custom Behaviour within FileVision by selecting it from the Tool Bar located at the bottom of the screen.



RELATIONSHIP MANAGER MODULE (RM or CRM)

RM templates

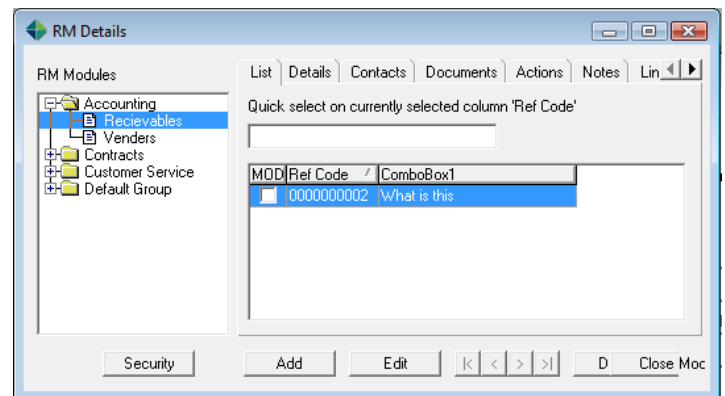
No longer do you have to have address and phone numbers displayed when the module is storing items without that type of information. Now you can select what, if any information goes on the main details page.

RM security

Security will be available for each module, each RM record and each EDF field. This new advanced security will allow "read-only" permission on the individual records.

Grouping of RM modules

You can now create groups to organise RM modules.



CUSTOM BEHAVIOURS (CB)

Custom Behaviours enable enhanced automation of business functions.

CB toolbar buttons

FileVision now supports icons to be placed on the toolbar that automatically activates your organisations Custom Behaviours, this could include generating e-Forms or reports.



DOCUMENT MANAGEMENT

Create Outlook email

You will now be able to email a document that is stored in FileVision to MS Outlook, allowing you to use the Outlook address book.

Scan to PDF

Scanned images can now be stored in the PDF file format or the original .tif format. Items will be scanned as PDFs and during the upgrade the existing Tiffs will be converted to PDF. (scanned docs will still be viewed with the viewer so it will appear the same as in 5.0)

PDF macro

This allows users to import PDFs directly from Acrobat viewer, the same way as MS Word and Outlook macros work.

ERM print output processing module

Document Security

Security will be available for each department and filing structure, it will be the new advanced security that would allow "read-only" permission on the individual records.

ADMINISTRATIVE FEATURES

Advanced security - inherited, read-only

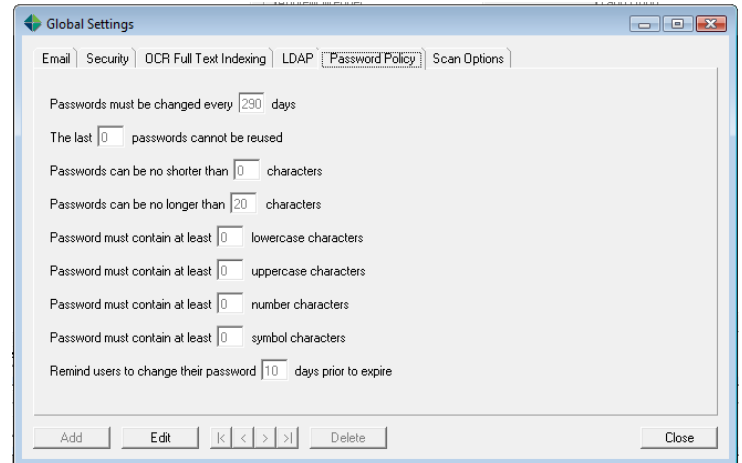
Both RMs and documents can now have "read only" security attached to a user.

Reserved users

Client access licenses can be reserved for individual users to ensure they have a license available when they want to log in to the system.

Password policy

Administrators can define password policy for their users. Password policies are designed to enhance computer security by encouraging users to employ strong passwords and use them properly.



E-Forms

Simultaneous e-Forms

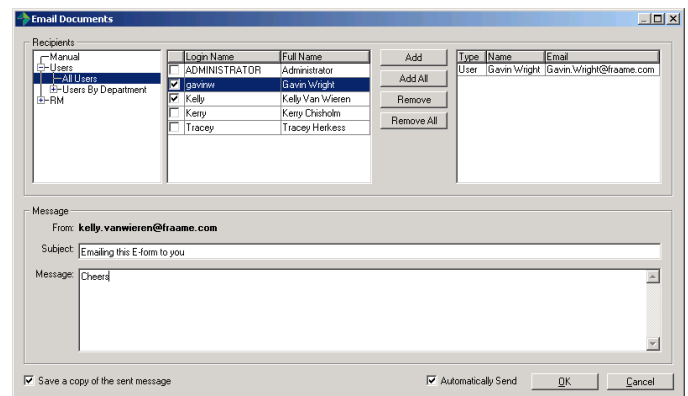
FileVision will now have the ability to have more than one e-Form open at a time.

E-Forms - list RM by name not reference code

All e-Forms that utilise a RM listing option can now have the full name as the selection option and not the reference code. This will make selecting the correct record quicker and easier.

Emailing an e-Form

E-Forms that are stored in the FileVision database can now be emailed out of FileVision just like any other document.



Version 2 – February 2010

CHRISTCHURCH HEAD OFFICE

PO Box 36-478
Merivale, Christchurch 8146
Phone +64 3 377 7632

SYDNEY OFFICE

71 Lombard Street
Glebe 2037, Sydney NSW
Phone +61 410 332 225

Business Partner

